



Beaufort County Public Works **Stormwater Infrastructure** *Project Summary*

Project Summary: Telfair Drive

Project #: 2009-157

Completed: Dec-09

Narrative Description of Project:

Clean out 217 L.F. of roadside ditch. Replaced (1) driveway pipe to correct elevation. Repaired washout. Jetted twin crossline pipes and (1) driveway pipe. Install rip rap, sod and handseeded for erosion control.

Material Cost, Rental Equipment Summary, and Labor

Material	Unit	Cost/Unit	Qty	Cost
15" RCP Pipe	linear feet	\$9.62	24.0	\$230.88
Fill Dirt	ton	\$1.00	10.6	\$10.61
Rip Rap	ton	\$47.08	3.7	\$175.61
Recycled Concrete	ton	\$1.00	14.2	\$14.18
Concrete	cy	\$143.38	2.5	\$358.45
Silt Fence	sy	\$0.78	5.8	\$4.55
Filter Blanket	sy	\$0.63	6.9	\$4.37
Turf Staples	each	\$0.03	88.0	\$2.64
All Purpose Sand	bag	\$3.80	2.0	\$7.60
Type "S" Cement	70 lb bag	\$9.35	2.0	\$18.70
10-10-10 Fertilizer	bag	\$11.72	0.3	\$2.93
Annual Rye Grass Seed	bag	\$19.21	0.3	\$4.80
Bermuda Grass Seed	bag	\$128.4	0.5	\$64.20
Centipede Sod	pallet	\$117.50	2.0	\$235.00
Pin Flag	each	\$0.06	2.0	\$0.12
4ft Flagger	each	\$0.34	4.0	\$1.36
Flagging Tape	roll	\$1.87	0.4	\$0.65
Water	gallon	\$0.01	1,800	\$18.00
Walk-Behind Saw Rental				\$88.81
Gas	gallon	\$2.40	60.5	\$145.20
Diesel	gallon	\$2.41	187.0	\$450.67
Labor	hours		385.0	\$12,937.76
Total Cost of Materials, Rental Equip., and Labor				\$14,777.10

Note: Labor cost includes the employee's salary plus fringe benefits.

Equipment Cost

Item	Asset No.	Cost/Hour	Hrs.	Cost
Komatsu Mini Excavator	23000	\$18.65	10.0	\$186.50

Site Photographs

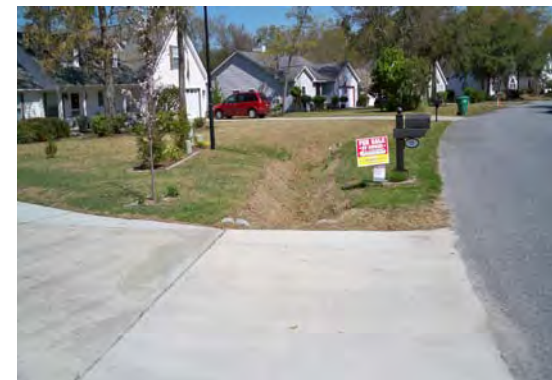
Before



During



After



Telfair Drive Project Summary Con't

Project #: 2009-157

Equipment Cost

Item	Asset No.	Cost/Hour	Hrs.	Cost
JCB Backhoe	22810	\$36.50	1.0	\$36.50
Bobcat T200	22782	\$17.40	2.0	\$34.80
JD Loader 444J	23271	\$29.75	3.0	\$89.25
Vacuum Truck	22812	\$20.30	14.0	\$284.20
Dump Trucks		\$16.68	50.0	\$834.00
Pickup Trucks		\$4.17	108.0	\$450.36
Total Equipment Cost				\$1,915.61

Cost/hour excludes fuel cost.

Total Cost: \$16,692.71

Site Photographs

Before



During



After



